

Darius Milhaud Second Symphonic Suite, Protée

CONTREBASSES

I. Ouverture

Modéré

pizz
p

2 3 4 5 6

[1] *arco*
mp

[2] *pizz*
p

[3] *pizz*
p

[4] *arco*
mf

[5] *f*
ff
ppp

[6] *arco*
mf

CONTREBASSES

C.B.

7

8

9

10

11

12

13

14

15

ppp

pp

mf

ff

pizz

arco

f

pp

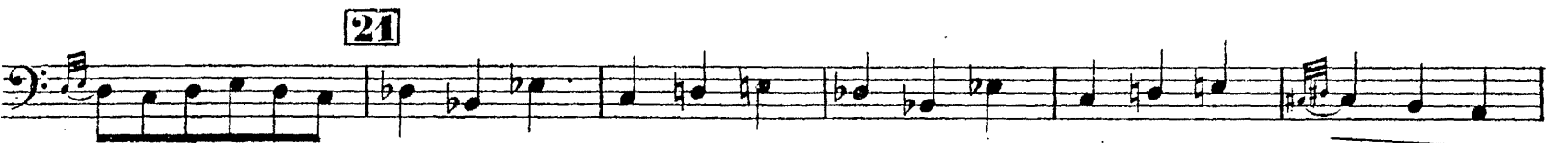
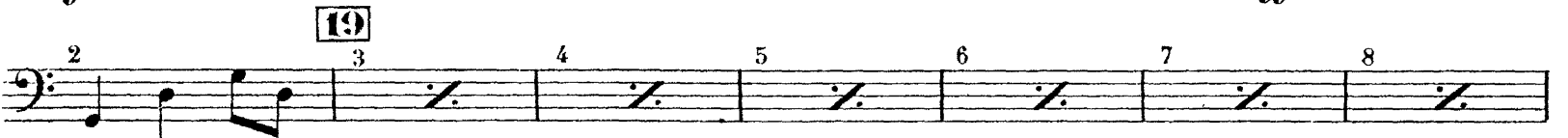
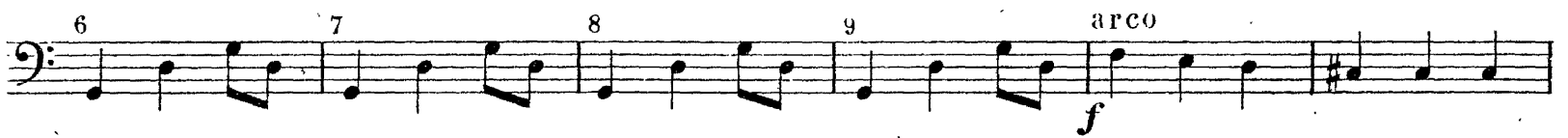
cédez

Mouvt

II. Prélude et Fugue

Très modéré

pizz



CONTREBASSES

p

23

mf

24

25

26

27

28

29

ff

très long

ff

30

31

1 2 3 4 5

Detailed description: This page contains the musical score for the Contrabasses part of Milhaud's 2nd Symphonic Suite, measures 23 through 31. The music is written on ten staves in bass clef with a key signature of one sharp (F#). Measures 23-29 consist of a rhythmic pattern of eighth notes with accents. Measure 23 starts with a piano (*p*) dynamic, and measure 24 begins with a mezzo-forte (*mf*) dynamic. Measure 29 is marked fortissimo (*ff*). Measure 30 features a fortissimo (*ff*) dynamic and a note marked *très long* with a fermata. Measure 31 is marked fortissimo (*ff*) and contains five measures of music, each with a finger number (1-5) above the notes and a slash indicating a rest.

CONTREBASSES

6 7 8 9

32

f

Animez jusqu'a la fin

mf *f*

33

ff

III. Pastorale

Souple et animé

pizz

2 3 4 5 6

pp

34

1 2 4

1 2 3 4 5

35

6 7 8 9 10

36 *arco*

pizz

pp

CONTREBASSES

37

arco

38

39

40

41

42

43

44

45

Mouv^t du début

pizz

CONTREBASSES

arco **46**

DIV. *ppp*
pizz

UNIS(arco) **47**

ff *mf*

48 1 4

ff *p*

49 1 4

50 2 2 pizz 2 arco

51 3

52 2 3

53 1 2 pizz 5 5 arco

pp *ppp*

54 2 sans ralentir

ppp

CONTREBASSES

IV. Nocturne

Souple et modéré

sourdine

p

54

55

1

pp

56

10

57

4

1^{er} Viol.

Cédez

au Mouv

C.B.

58

pp

5

rall.

1

59

au Mouvt

pp

mp

60

sans ralentir

CONTREBASSES

V. Final

Vif
sec pizz 1 1 1 1
f

61 *arco*

f

62 *pizz* 1 63

64 1 5 *p* 65

66 *arco* 3 2 *p*

67 2 *pizz* *f* *arco*

68 *pizz* *arco*

ff

Un peu moins vif

69 *pizz* 70 1 *pp*

CONTREBASSES

4 **71** 1 Tromp. C.B. 1 arco 2

3 4 5 6 **72** **73** *ff* *mf*

74 pizz *mf* 1 1 1 1

75 arco

76 pizz *mp* 1

77 **78** arco *ff* **Très vif** 6/8

Detailed description: This page contains the musical score for the Contrabass part of the 2nd Symphonic Suite by Milhaud, measures 71 through 78. The score is written in bass clef with a key signature of one sharp (F#). Measure 71 begins with a 4-measure rest, followed by a melodic line starting on G4. Measure 72 features a series of chords (F#4, G4, A4, B4) and a melodic phrase marked *ff*. Measure 73 continues with chords and a melodic phrase marked *mf*. Measure 74 is marked 'pizz' and features a series of chords marked with '1'. Measure 75 is marked 'arco' and features a melodic line with slurs and accents. Measure 76 is marked 'pizz' and features a melodic line with slurs and accents, marked *mp*. Measure 77 is marked 'arco' and features a melodic line with slurs and accents. Measure 78 is marked 'Très vif' and features a melodic line with slurs and accents, marked *ff*. The score includes various performance instructions such as 'Tromp.', 'C.B.', 'arco', 'pizz', and dynamic markings like *ff*, *mf*, and *mp*.